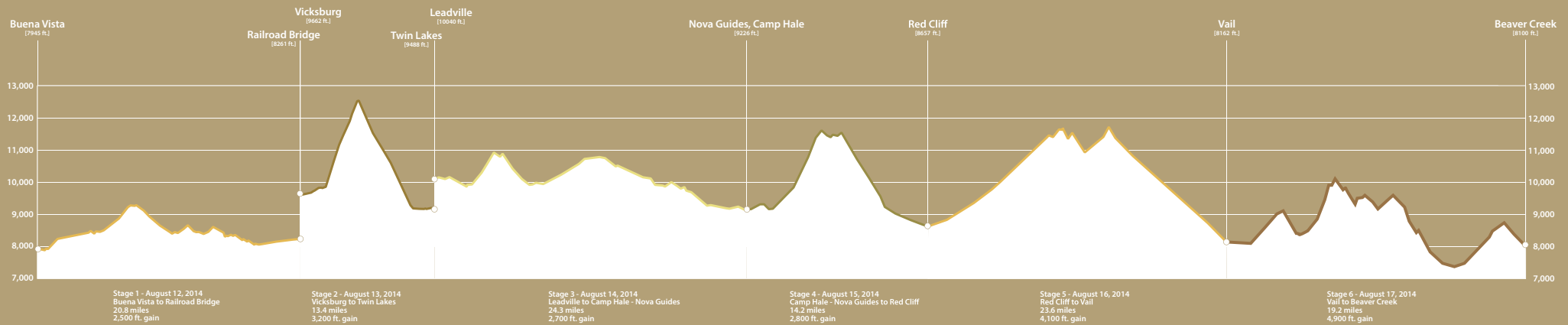




THE 8TH ANNUAL PEPSICO TRANSROCKIES™ RUN FUELED BY GATORADE | AUGUST 12-17, 2014 | BUENA VISTA TO BEAVER CREEK, CO | 116 MILES | 20,000 FEET OF GAIN



Stage 1 - August 12, 2014

Buena Vista to
Railroad Bridge



Distance: 20.8 miles

Climbing: 2500 feet

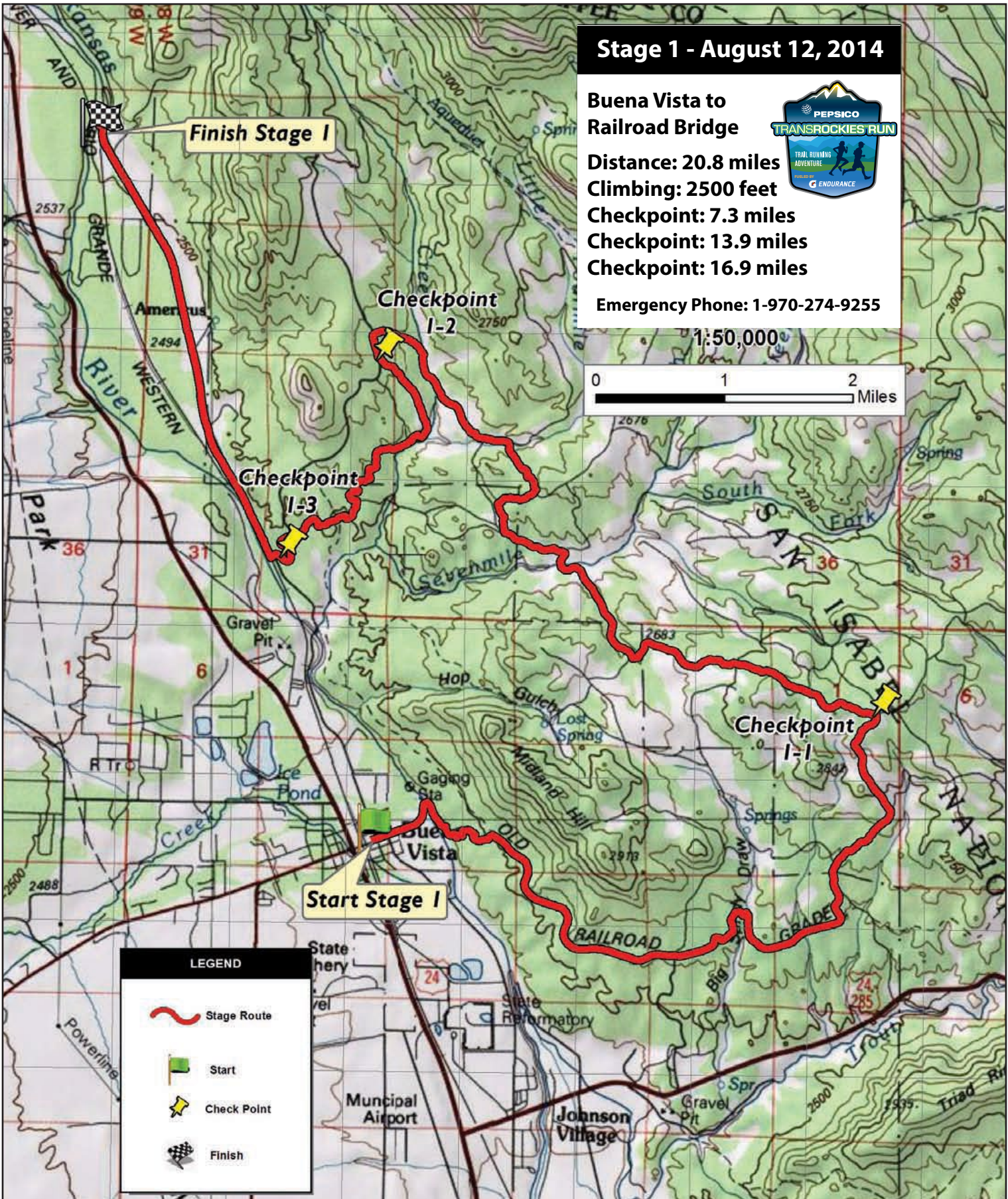
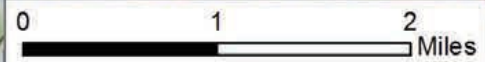
Checkpoint: 7.3 miles

Checkpoint: 13.9 miles

Checkpoint: 16.9 miles

Emergency Phone: 1-970-274-9255

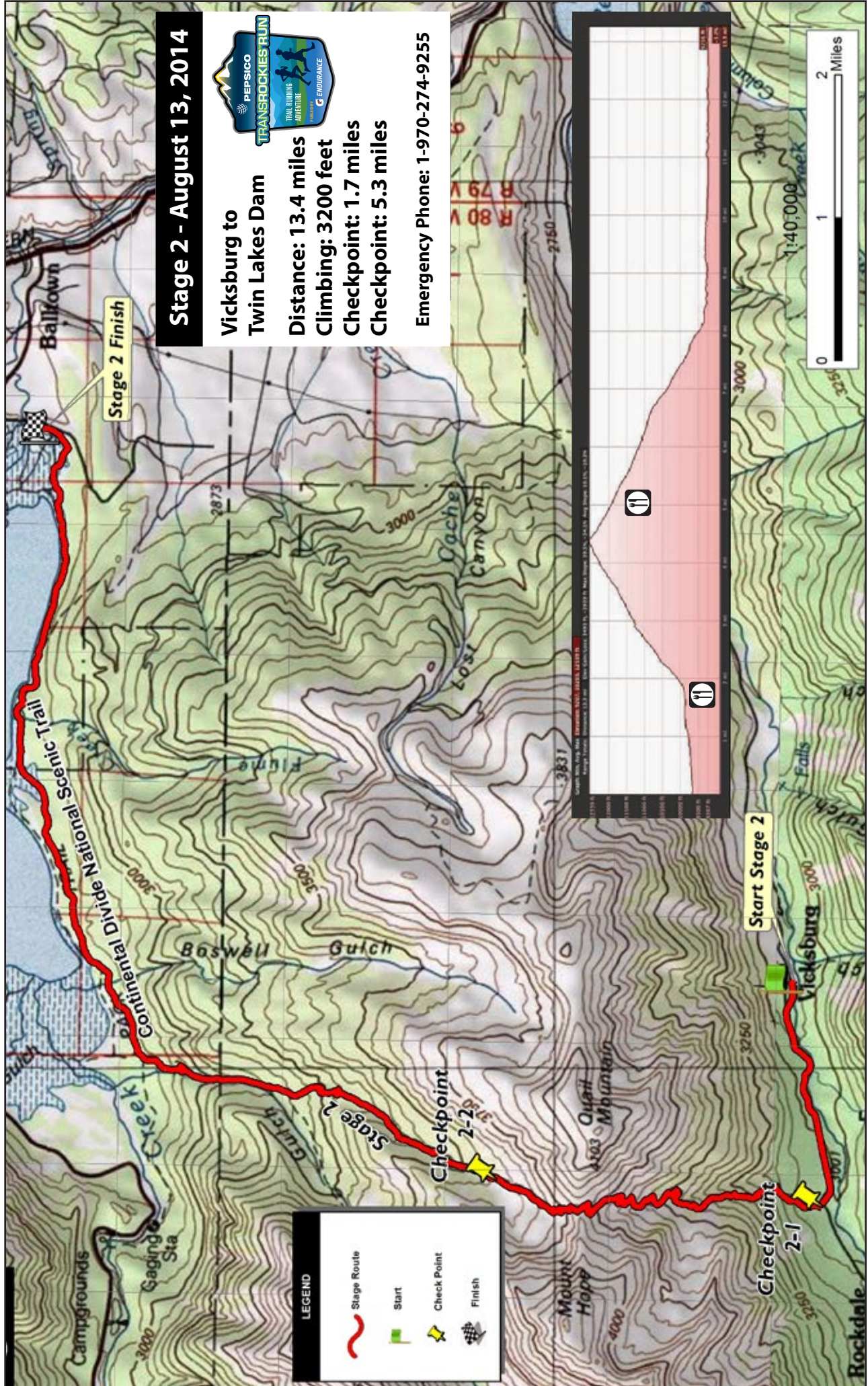
1:50,000



LEGEND

- Stage Route
- Start
- Check Point
- Finish





Stage 2 - August 13, 2014

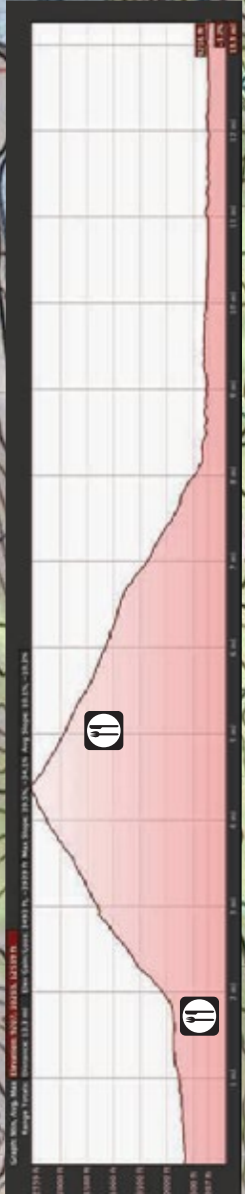


**Vicksburg to
Twin Lakes Dam**
Distance: 13.4 miles
Climbing: 3200 feet
Checkpoint: 1.7 miles
Checkpoint: 5.3 miles

Emergency Phone: 1-970-274-9255

LEGEND

- Stage Route
- Start
- Check Point
- Finish



Stage 3 - August 14, 2014

Leadville to Nova
Guides at Camp
Hale



Distance: 24.3 miles

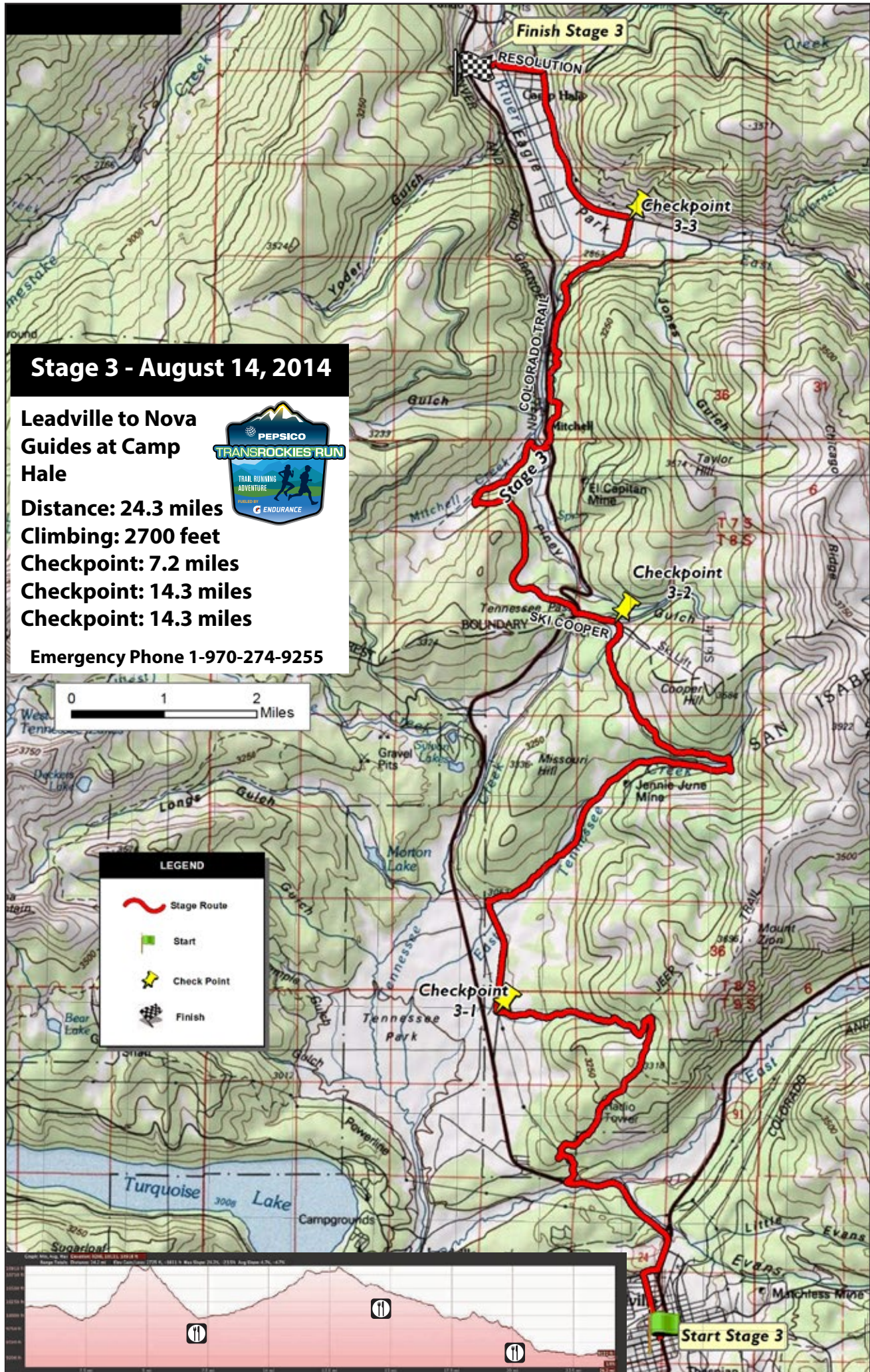
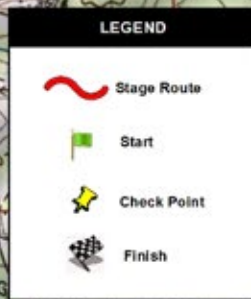
Climbing: 2700 feet

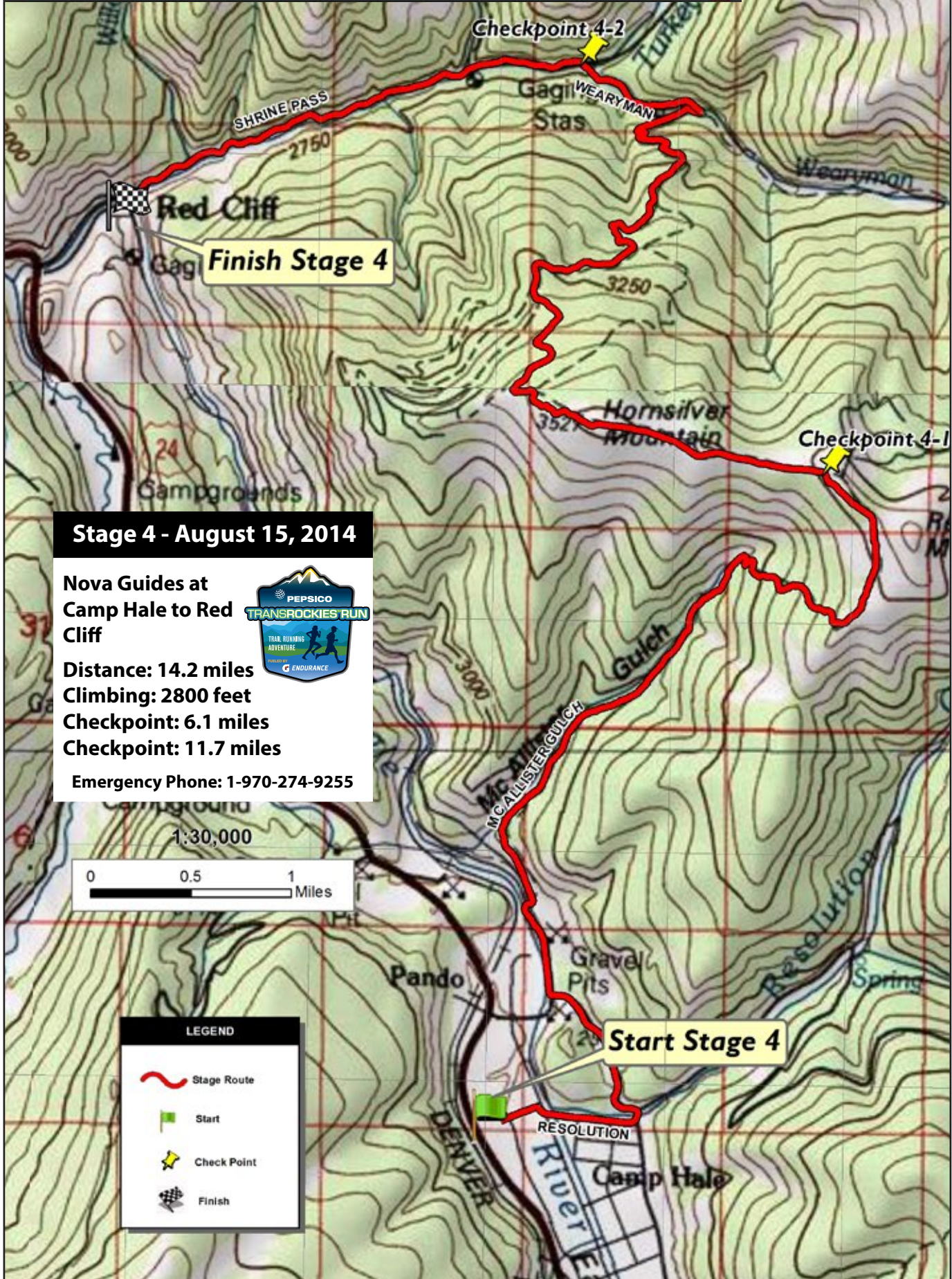
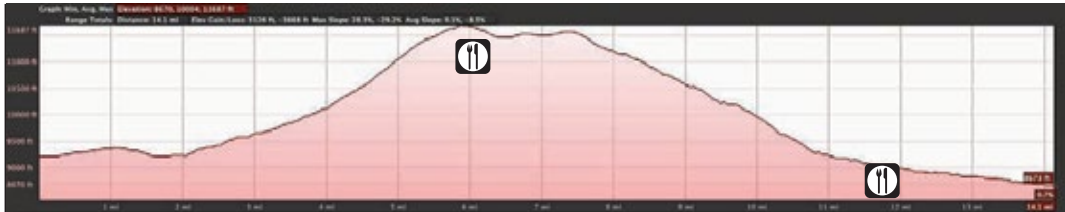
Checkpoint: 7.2 miles

Checkpoint: 14.3 miles

Checkpoint: 14.3 miles

Emergency Phone 1-970-274-9255





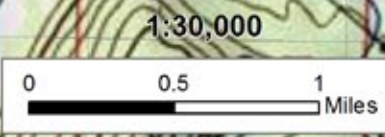
Stage 4 - August 15, 2014

Nova Guides at
Camp Hale to Red
Cliff



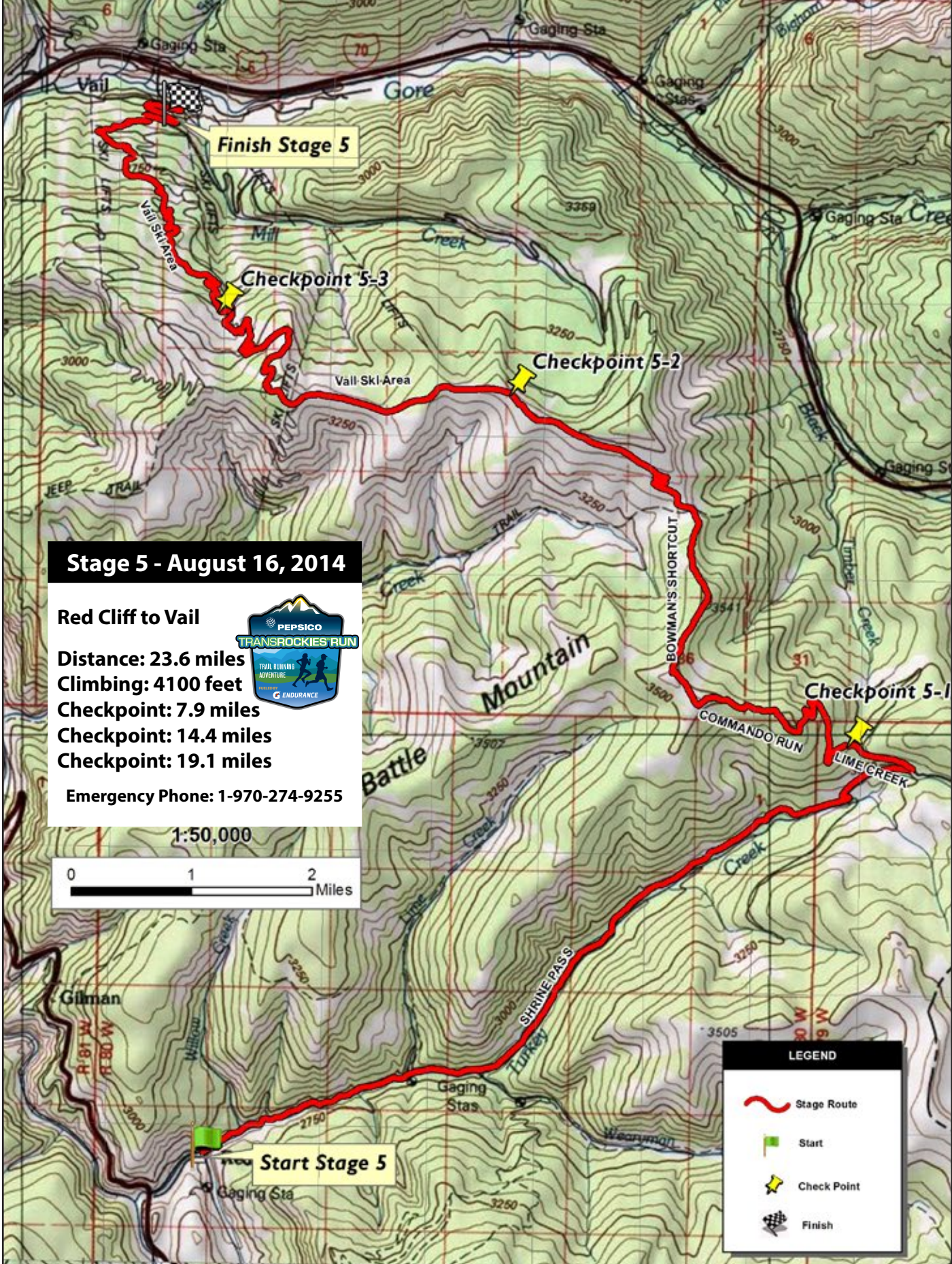
Distance: 14.2 miles
Climbing: 2800 feet
Checkpoint: 6.1 miles
Checkpoint: 11.7 miles

Emergency Phone: 1-970-274-9255



LEGEND

- Stage Route
- Start
- Check Point
- Finish



Stage 5 - August 16, 2014

Red Cliff to Vail

Distance: 23.6 miles

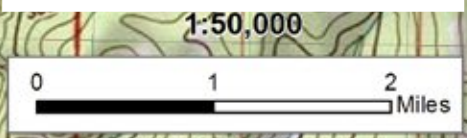
Climbing: 4100 feet

Checkpoint: 7.9 miles

Checkpoint: 14.4 miles

Checkpoint: 19.1 miles

Emergency Phone: 1-970-274-9255



LEGEND

-  Stage Route
-  Start
-  Check Point
-  Finish

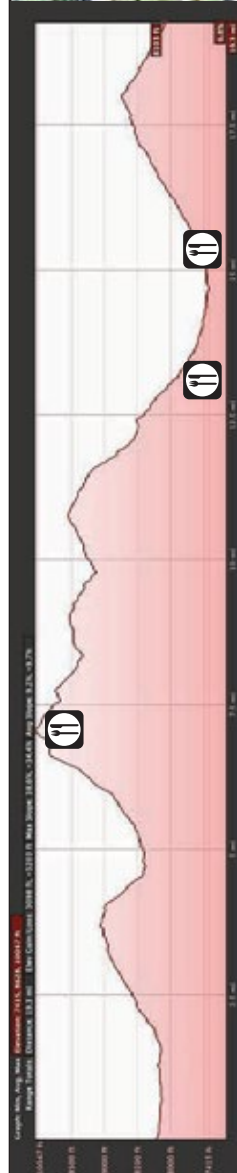
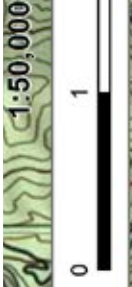
Stage 6 - August 17, 2014

Vail to Beaver Creek



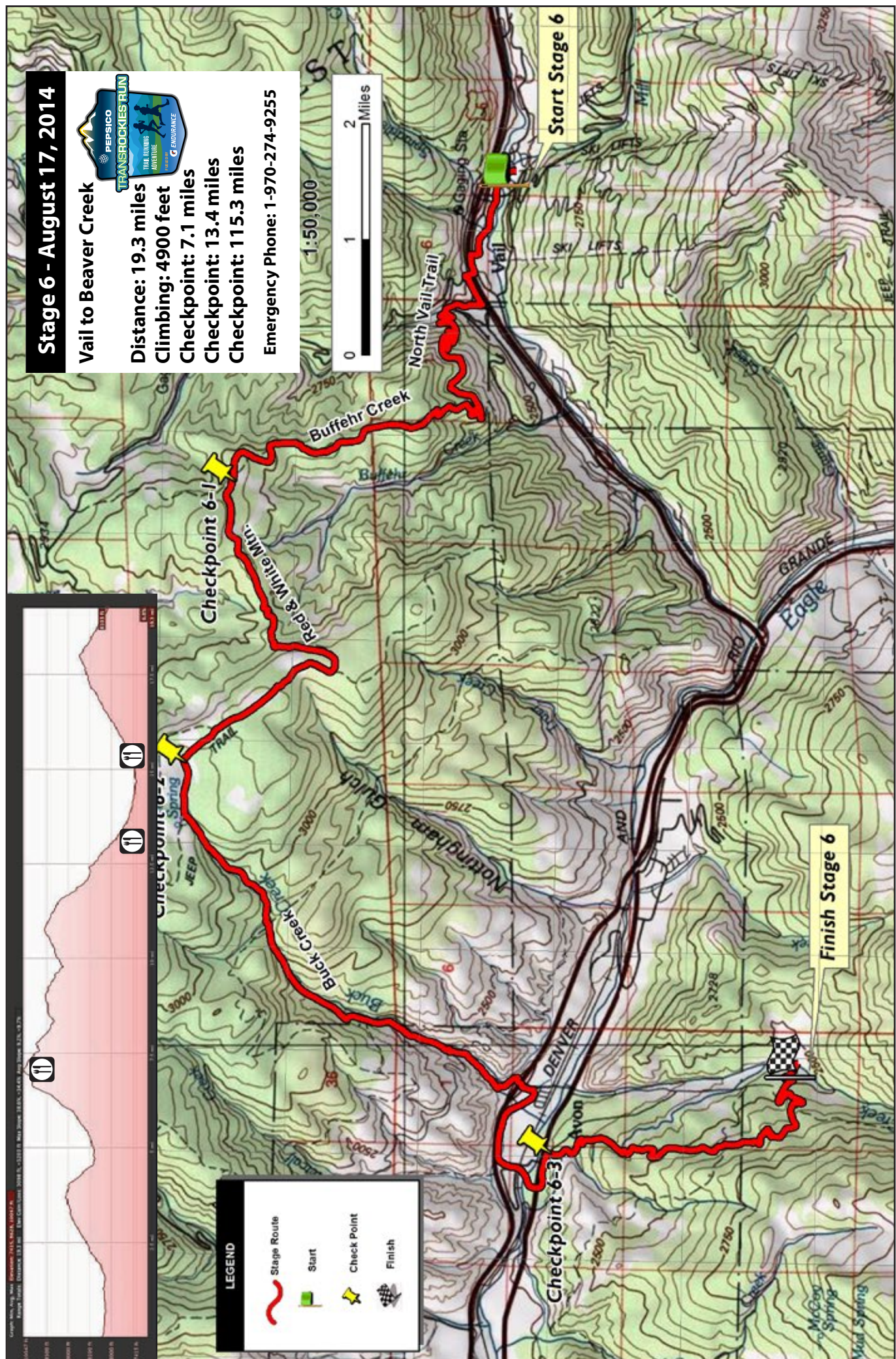
Distance: 19.3 miles
 Climbing: 4900 feet
 Checkpoint: 7.1 miles
 Checkpoint: 13.4 miles
 Checkpoint: 115.3 miles

Emergency Phone: 1-970-274-9255



LEGEND

- Stage Route
- Start
- Check Point
- Finish



Start Stage 6

Finish Stage 6

Checkpoint 6-1

Checkpoint 6-3

Checkpoint 6-2